

SMURF
COLLECTORS
CLUB
INTERNATIONAL

24 Cabot Road W.

Massapequa, NY 11758

VOL. 8 NEWSLETTER 30

FALL 1993

COLLECTORS

JUMP ON THE



BANDWAGON

TOO.....

CROSSOVER COLLECTING IS LOTS OF FUN!!!

MCDONALD'S SMURF PROMOTION

We are pleased to present this article to answer the many letters we received over the past seven years asking why McDonalds never had a Smurf Promotion. Why only Hardees?

Our research for this article has taken fifteen months! Hundreds of letters have been written by our staff to Smurf Collectors and McDonalds collectors all over the United States and Canada.

Only a few McDonald collectors were aware of what is called **REGIONAL PROMOTION**. The Smurf McDonald Collectible we are about to feature was **ONLY** available in..... **TORONTO, CANADA!** It was produced in conjunction with Canada's Wonderland Theme Park and licensed by Wallace Berrie.

A very special THANKS to John & Eleanor from California, Helene, Gerry, and David, all from Canada, and the McDonald's Archives. Your help in presenting this article to our members was invaluable!

McDonalds Background Information

USA Today ran a graphic illustration a few years ago demonstrating that one in every eight Americans had worked at a McDonald's restaurant at some time. During the past decade, there were years when a new McDonald's restaurant opened somewhere in the world every 17 hours. Probably the number of Americans who have never eaten at a McDonalds could be counted on one hand. The fast-food chain has become ingrained in our culture. The television commercials, Happy Meal Toy Premiums, Golden Arches and Ronald McDonald are all familiar trademarks of the corporation. As a result of their prevalence and their more than 37 years on the market, items from the restaurants have begun to be sought and highly prized by collectors.

Dick and Mac McDonald opened their first McDonalds drive-in restaurant in San Bernardino, Calif., in 1948. In 1954 Ray Kroc had become a franchising agent for the McDonald brothers and, by 1955, they had opened a restaurant in Illinois and a second in California. The innovative style and speedy service developed by the restaurant translated into increased sales and, in 1956, 12 additional restaurants were opened. In the early '60s the chain continued to grow and some of the first advertising promotions were done.

Happy Meals were first sold in 1977 as a promotion in St. Louis, Mo. and were later introduced nationwide in 1979. Since that time hundreds of different promotions have been done nationally or regionally. The giveaways have included promotional tie-ins such as our Smurf Collectible Tumblers.

About the Collectors

We have learned that McDonald's collectors usually classify themselves by the types of items they covet. The largest group of these people are the Happy Meal Toy collectors.

McDonald's glasses and tumblers are the second largest area of collectibility. These sets have been available since the early '70s. There were a number of large national promotions. The more difficult sets to find are regional issues like the Toronto set on which the Smurfs were featured.

A third area of crossover collectors are those who collect Fast-Food cartoon glasses and tumblers; another collecting field in it's own right.

The following is, we hope, a complete detailed listing of all the Smurf tumblers produced. If anyone has any information to add to this article please let us know.

We are listing each COMPLETE SERIES, even though some consisted of tumblers featuring other Hanna Barbera characters.

The tumblers are all 16 oz. size, manufactured by Canada Cup, Styroware. The Graphics and colors are, in our view, outstanding!

McDonald's Canada's Wonderland Tumblers

Featured below and appearing on every tumbler:



McDonald's



TM

SMURF™ ©1984 Pops
Authorized by Universal Studio
Licensing, Inc. Int'l Ltd.
Copyright Canada's Wonderland
Limited 1984
"Registered Trade Marks of
Canada's Wonderland Limited
for its Theme Park."
"Created by H.M. Gammie's Corporation"

The FIRST SERIES was produced in 1984 and consisted of **THREE** Smurf tumblers:

1. See PAPA SMURF in Smurf Forest at Canada's Wonderland.
2. See BABY SMURF in Smurf Forest at Canada's Wonderland.
3. See SMURFETTE in Smurf Forest at Canada's Wonderland.

The above titles are on each tumbler along with their wonderful wrap-around scenes.

The SECOND SERIES was produced in 1985 and consisted of **THREE** Smurf tumblers:

1. Smurf Fun Begins at Canada's Wonderland. Description of graphics on this tumbler: Smurf, Baby and Smurfette each riding a snail.
2. Smurf Fun Begin's at Canada's Wonderland. Description of graphics on this tumbler: Smurf Forest w/Papa, Smurfs, Smurfette and Gargamel featured.
3. Smurf Fun Begins at Canada's Wonderland. Description of graphics on this tumbler: Smurfs, Papa, Smurfette, Baby - Hot Air Balloon Scene.

The THIRD SERIES, consisting of 3 tumblers, was produced in 1986 and included **ONE** Smurf tumbler:

1. The Mystery continues at Canada's Wonderland - Yogi Bear Clue #1.
 2. The Mystery continues at Canada's Wonderland - The Flintstones Clue #2.
 3. The Mystery continues at Canada's Wonderland - The Smurfs Clue #3.
- Description of graphics on this tumbler: Here's Clue #3...The Smurfiest Adventure is waiting for you...Look for the falls...it could be a clue!
Features: Smurfette, Papa, Baby and Brainy.

The FOURTH SERIES, consisting of 3 tumblers, was produced in 1987 and included **ONE** Smurf tumbler:

1. The Jetson Family at Canada's Wonderland.
2. The Flintstone Family at Canada's Wonderland.
3. The Smurf Family at Canada's Wonderland. Description of graphics on this tumbler: Papa saying, "Smurfette, How many flowers are there in Smurf Forest?" Smurfette saying, "Gee Papa Smurf, Let's count them together." Vanity and Baby also appear.

The FIFTH SERIES, consisting of 3 tumblers, was produced in 1988 and included **ONE** Smurf tumbler:

1. The Jetson's visit Racing River at Canada's Wonderland.
2. The Flintstone's visit Racing River at Canada's Wonderland.
3. The Smurf's visit Racing River at Canada's Wonderland. Description of graphics unavailable.

The SIXTH SERIES, consisting of 3 tumblers. was produced in 1989 and included **ONE** Smurf Tumbler:

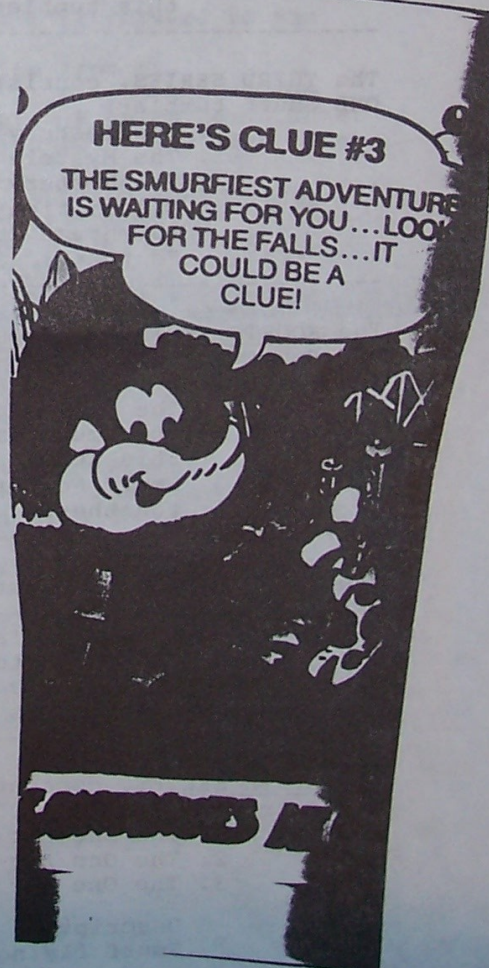
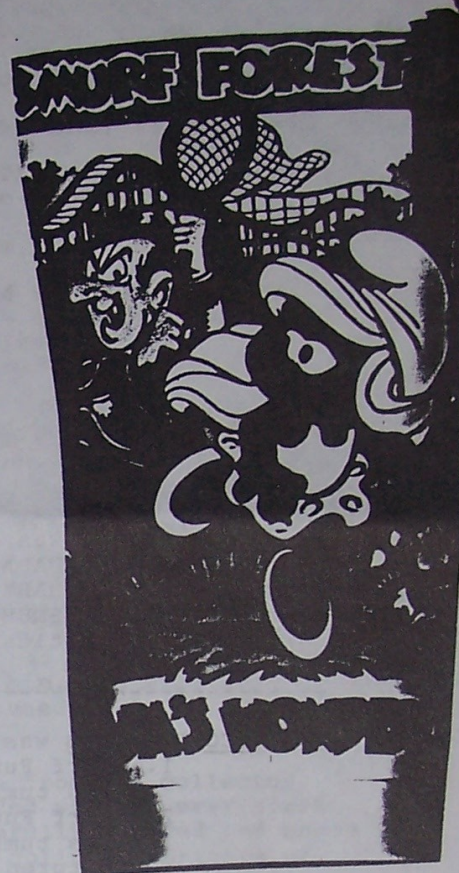
1. The One for All the Fun Canada's Wonderland - Yogi Bear.
2. The One for All the Fun Canada's Wonderland - The Flintstones.
3. The One for All the Fun Canada's Wonderland - The Smurfs.

Description of graphics: Papa shooting a Smurf out of a cannon, Smurf flying a plane, Baby Smurf, Smurfette, and a Smurf.



S
A
M
P
L
E

GRAPHICS



COLLECTORS' COMMENTS.....

Hi Suzanne,

I found a new drink. Maybe you heard about it! **SMURES UP.** It's Blue Hawaiian Schnapps and 7-Up. The best bars in town are selling it, so the kids tell me. Sometimes they put pineapple juice in it too.

Linda from Pa.

Dear S.C.C.I.,

I enjoyed the Smurf-Search-A-Word hope more will be published, it makes the Newsletter enjoyment last longer.

I also enjoyed the first publication of the MOLD VARIATIONS. We will all be looking for many-many more Smurf figurines we didn't know we needed.

Keep up the good work!

Elena from Wa.

Dear Elena & All Members;

Thanks to all who have written to us about our New Mold Variation section. Please remember that your INPUT is very important to us! We are continuously seeking information and articles to publish. Keep them coming!!!

Board of Directors

S.C.C.I.

Dear Suzanne;

I don't think the new figurines painted and produced in China are as nice as the ones produced in Germany. They could be painted a lot better! They look like hit and miss to me. What do you think?

Lillian from Fla.

Dear Lillian;

We, at Club Headquarters, had no objection to the painting on the China figurines. We did however, have an objection to the mold used (designed) for #20420 Scruples. Many of these figurines had difficulty standing. Schleich was contacted and we are awaiting a mold correction. It appears the ORIGINAL ISSUE #20420, SCRUPLE, will soon be in short supply. The Club has a few, Original Issue Scruple figurines available for anyone still needing him. We will send out a bulletin when the corrected figurine arrives. Stay tuned.....

Suzanne

Dear Suzanne;

Thank you for the most informative newsletter! I am a "rookie" collector, we've only been at it for a year, but our Smurfs have resided with us ever since my daughter, Ginny, discovered them as a child. We've carefully wrapped and moved them from house to house, city to city, until finally some collector friends of ours suggested we begin to collect in earnest. That was a year ago.....and we've been Smurfing since!

Thank you so much. The Newsletter always makes us look forward to the season changes even more!

Christine from Mi.

Dear S.C.C.I.,

I recently purchased a plaster (Heavy) Smurf Lamp at a Flea Market without a shade. The figure is 11" tall with an upright stance, arms at the side, bent at the elbow.

Can anyone give me some information on this lamp. Is it a licensed product? Can anyone supply me with a photo of the lamp shade? Thanks to all in advance.

La Verne from Va.

Dear Suzanne;

I have purchased a card game called "The Smurfs Card Game." It's licensed by Wallace Berrie. The cards have different sayings on them like "Smurfette takes Papa Smurf," "Papa takes Smurf," "Gargamel takes All." Does anyone have directions on how this game is played? The cards all have different pictures on them and are really cute. Thanks!

Rhona from Om.

Dear Suzanne;

I have found many Smurf items here in California over my eleven years of collecting, but I have yet to see a Smurf Cookie Jar. Were Smurf Cookie Jars ever produced? If the answer is yes, do you know of any available for sale? I would love to add one to my collection!

Katherine from Ca.

To All Members:

Can anyone help La Verne, Rhona, and Katherine? Let us hear from you!

Dear Suzanne;

I am pleased to see that a Scruple figure has been added to the Schleich line of figurines. They should manufacture more human friends of the Smurfs such as Bigmouth, Mother Nature, Father Time, Omnibus, Hagatha, etc. These humans are a very important part of our collections and villages, as well as the cartoons!

Smurfologist from Ks. Greg

GOOD LUCK, BABY MIRANDA FROM FLORIDA. "AMERICA'S MOST BEAUTIFUL BABY PAGEANT."

Airs on USA Network
To be held Sept. 23-26th.
Watch for it in your T.V.

Guide Listings

COLLECTORS' COMMENTS.....

Dear Suzanne;

I just received the new figures for 93! I LOVE 'EM ALL!! I do have one recommendation for display purposes to share. The Boxer Smurf (#20419) should be displayed with two of these figures facing each other. One figure alone is boxing air; he should be boxing another boxer! I have displayed my NEW Boxer Smurf facing the original issue Boxer from the Super Smurf. The paint variation of the two boxers makes my display very unique! For this purpose, I would be willing to share some of my original issue Boxers with others. Please run my ad.

Jordan from Miss.

Dear Jordan;

We have done exactly as you describe and, we do agree, you are correct, they look great together! Thanks for the input!

Suzanne

Dear Suzanne;

My husband and I recently returned from a trip to Europe which included Germany, Poland, the Czech Republic, Hungary and Austria. While traveling we always are on the look-out for Smurfs. We had no luck in Hungary and Austria. In Poland the only Smurf I saw was painted on the balcony of an apartment. (We were on a bus and moving too quickly for me to get a photo.) In Brno in the Czech Republic we found a Smurf magazine SMOULOVÉ for June '93 written in Czech. I am enclosing a photocopy of the cover to share with the Club.

Joan from Ct.

Dear Joan;

Thanks for SHARING this with us all!

12

Německo DM 2 / Rakousko S 16 / Švýcarsko fr 2 / Francie F 8,50
Itálie L 2000 / Holandsko f 2,60 / Španělsko P 175

22,- Kč

BASTI
MOBA

6 - 93



Smoulek
se jde
koupat

da' se Trampetka stal Skoro vodník



BULLYLAND

Bully-Figuren, die lebenswerten, fröhlich-weichen Spielgefährten



DISPLAY PRODUCTS

Since the introduction of Schleich's New Mushroom Curio display in 1993, we have received an overwhelming amount of mail asking for more information on items that have been produced over the years for display purposes.

We will be featuring these display items in upcoming Newsletters.

Some displays were produced solely for Smurfs, but numerous other displays were produced by Bully, Schleich, and Wallace Berrie, for use with all 2" PVC figurines.

Our first display items were produced in the early 70's by Bully. Featured below is a two-part display; a locomotive and what is stated to be a wagon.

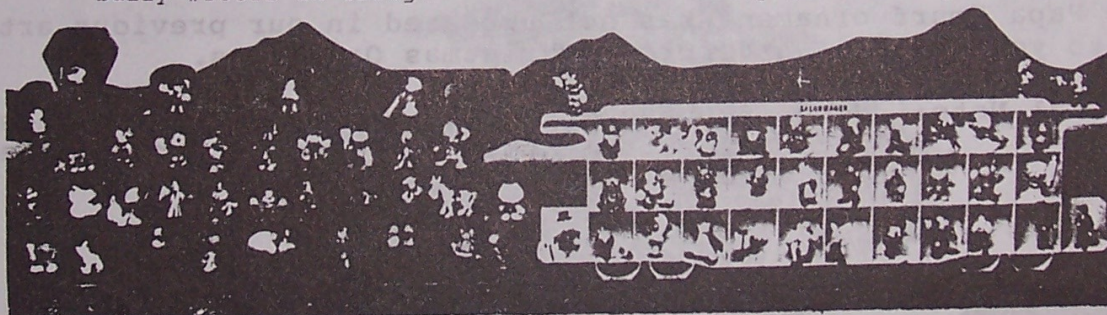
The locomotive was produced in black and orange and measured 734MM by 350MM. It had some 31 compartments to display figurines.

The wagon was produced in green and yellow and measured 748MM by 244MM. It also had 31 compartments to display figurines.

They could be mounted on a wall!

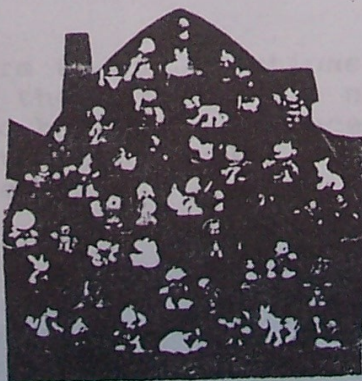
Bully #10011 in black
&
Bully #10012 in orange

Bully #10021 in green
&
Bully #10022 in yellow



Bully's second display, also produced in the early 70's, was their display house. This item was produced in orange, green and brown. It measured 470MM by 480MM. It had some 52 compartments of various sizes in which to display figurines.

Bully #100001 in orange
Bully #100002 in green
Bully #100003 in brown



Display Products continued.....

Last, but not least, YES, BULLY DID PRODUCE A SMURF HOUSE IN THE EARLY 70's!!!

It's number was 101099. It is a LARGE SMURF HOUSE that measures approximately 11" high. It has an orange roof, and yellow bottom. The doors and shutters are green and the windows are trimmed in brown.



UPDATE....CHRISTMAS ORNAMENTS BY ALDERBROOK, CANADA

See Articles in:

Newsletter 12, Spring 1989

Newsletter 21, Summer 1991

Thanks to our Canadian members for keeping us informed about these very unique Smurf Christmas Ornaments!

The Smurfette ornament appeared in Newsletter 21, but the greeting sign is different, and it is dated.

The Papa Smurf ornament has not appeared in our previous articles. Add him to your list of Alderbrook Christmas Ornaments.

Special Note: Some of these ornaments came with interchangeable, peel off extra labels in French. Some of these are featured below.



SCITROUMPE
ET BAISÉ À NOËL
1982

C'EST LA
SAISON D'ÊTRE
SCITROUMPEUX
1982

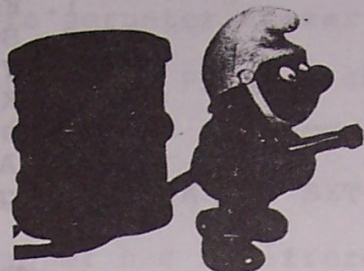
JOYEUX
FÊTES DE LA
PARTS DES
SCITROUMPE
1982



MAJOR DISCOVERY !

We may have made another major discovery! Funny how, even though you look at something a zillion times, you don't really see it.

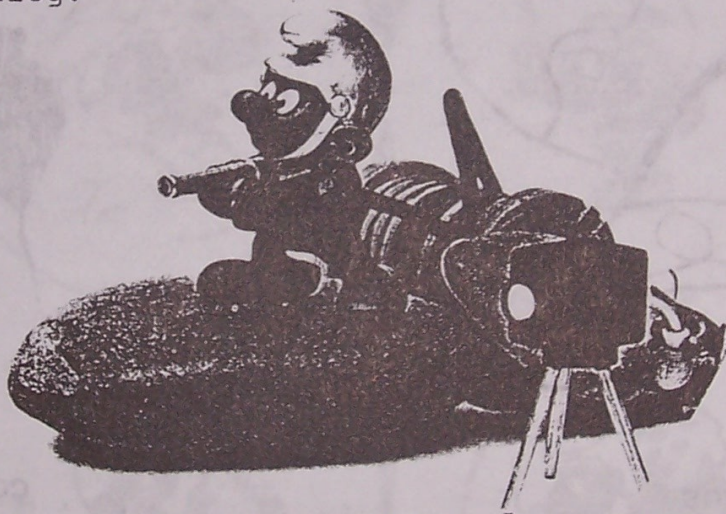
The 1981 German Schleich catalog shows a #40216 Super Fireman variation. We are all familiar with the fireman with his hose and water canister (drum):



40216

The figurine comes in two major color variations. See the Club's catalog.

But how many of you have seen the version shown below? As it appears in Schleich's 1981 catalog:



Although partly obscured by Photographer's camera, it seems apparent that the fire hose is coiled around a "wooden" spool, similar to the type that used to be on the backs of fire engines! Spools of this type can still be seen on Power Co. trucks!

Do any members out there own this variation? If so, we need to hear from you. Send a detailed description and, if at all possible, photocopies of the packaging (Super Box).

Although Schleich's answers to our questions seeking information about their catalog photos is always the same "It was never produced in this manner," we know that a prototype had to have been produced to secure this actual photo. There are, at the very least, the prototypes. This has been proven to us in the past, as we all have learned!

MOLD VARIATION



2.0023 Rock'n'roll

COMPLETE MOLD VARIATION

Mold A.

1. Feet far apart.
2. Large head & Face.
3. View from the back, hand is smooth; no fingers are formed.
4. Area between legs is smooth & blended together w/o definition of guitar.

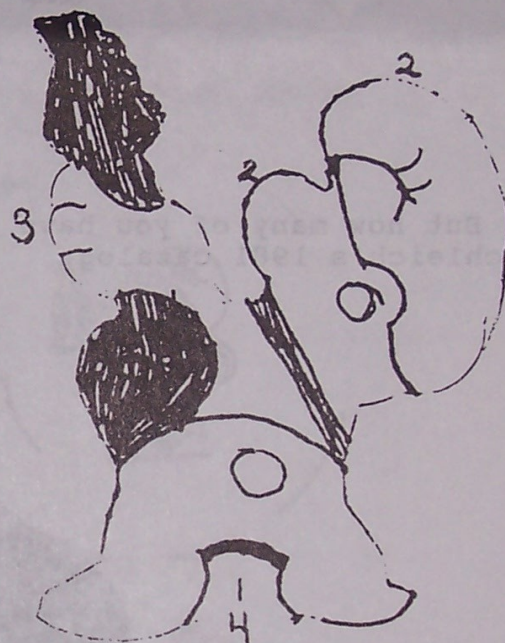


COUNTRY MARKINGS
FOUND ON
MOLD A

Sri Lanka painted Sri Lanka
West German

Mold B.

1. Feet closer together.
2. Smaller head & face.
3. View from the back, Knuckles and fingers are formed.
4. Area between legs and guitar is sharply defined.



COUNTRY MARKINGS
FOUND ON
MOLD B

Hong Kong
West German painted Portugal

SPECIAL NOTE: This Mold Variation section deals strictly with molds and not paint variations. See our regular variation section for paint variations.

FROM ITALY.....

Made by Giovanni Trimboli Designs
Peyo licensed by Ed Dupuis

Although made in Italy, this set was produced for the German Market. The box reads:

"Gla serunter setzer sortiert"

Set of Six Plates, 4 $\frac{1}{4}$ " around,
made to set glasses on.

"COASTER SET"

Each heavy plastic coaster has a different Smurf design, as featured below.

Beautiful, vivid colors. All have a yellow/gold background.



FROM BELGIUM & FRANCE.....

Made by Sallent hermanos, S A
1984 Peyo licensed by
"BELAKOPI"

WOODEN PUZZLES

When completed, the puzzle stands upright on a stand.

* Collect the whole series, 28 different puzzles in all.
Featured below:



collection de 28 PUZZLES ET FIGURES



La conformité aux normes de sécurité du présent
produit est garantie par Éditions Ravensburger.
Ne convient pas à des enfants de moins de 36 mois.

Made by Sallent hermanos, S.A.



collection de 28 PUZZLES ET FIGURES



Fabriqué en Espagne

SPECIAL REMINDER: Our next Newsletter will not arrive until AFTER the Christmas Holidays. Purchase your Smurfy Holiday Gifts from this Issue. The Club will gladly set aside any 2" Smurf Figurine, Super Smurf etc. that we have available. Simply drop us a note and we will reserve your gifts.

BUY...SELL...TRADE

How to respond to an Ad: Send your request to the Club with a Self Addressed Stamped Envelope (S.A.S.E.) The Club will respond with availability and asking price. Responses go out on a first come basis. Most items FOR SALE only have One item available.

How to submit an Ad: All members are provided with a Free Ad Blank. These forms Must be used. Send your Ad with a S.A.S.E. Numerous Ads are Sold, traded, etc. before publication and will not appear in the Newsletter. If anyone is seeking a special item contact the Club with your request.

Ad #		
553	For Sale	1991 Special Club Offer: Muster Marking, RARE SAMPLE SMURF Limited to 117 figurines, with letter of Authentication!
554	For Sale	Mattel Preschool Magic Talk Smurf Village, in Original Box. Never used, Peyo 1983.
555	For Trade	Mint Condition "Smurf Party Time" sing along Record 33 1/3 RPM, word sheet included. Trade for 20002 Normal and 20007 Angry Small Mold Only, must be Mint!
556	For Sale	Schleich's 1985 Jubilee Issue, full color catalog. Shows, in full color, all the Smurfs and Super Smurfs produced up to 1985. In German! Many German variations shown!
557	For Sale	1990 S.C.C.I. Limited Edition Figurine, "Celebration Smurf" 200 Edition, Mint with letter of Authentication #174.
558	For Sale	Figurine #20057 Thirsty with Green Soda Pop Bottle! Mint!
559	For Sale	Figurine #20136 Smurf Holding Pumpkin, NO FACE ON PUMPKIN! Mint.
560	Wanted	SMURFAGRAMS from different States Example: "You Have a Friend in Dallas." Mint please. State asking price in first letter.
561	For Sale	RARE OLD BULLY Large Smurf House, as featured in this Newsletter! Good Condition, no box.
562	For Sale	RARE Large Smurf House by Schleich, GREEN ROOF!!! Made in West Germany with Stickman marking. Good Condition.
563	For Sale	Smurf Coaster Set, as featured in this Newsletter. Made in Italy.
564	For Sale	Smurf FINGER PUPPETS! Old & Rare! 1. Angry (Black Smurf), 2. Papa Smurf, 3. Smurf, 4. Brainy, 5. Naughty, 6. Smurfette Please state interest in first letter. Prefer to sell as set! Mint.
565	Wanted	Smurf Movie Poster from their first full length Movie!
566	For Sale	Figurine #20227 Table Tennis, Original Issue, WINE SHIRT! Good Condition.
567	For Sale	Figurine #20047 Trumpeter, RARE, Orangy/Red Pants. West German, Fair Condition!
568	For Sale	Soft PVC Mini Smurf Charms, OLD, RARE! Mint Condition. 1. Laughing, Yellow and Red. 2. Torchbearer, Green and Red. GREAT OLDIE!!!!
569	For Sale	3. Sleepwalker, Yellow and Blue. State interest in first letter! Mc Donald's, Canada Wonderland, 11oz. Tumblers, as featured in This Newsletter. State interest from listing in article please! Mint Condition, REGIONAL PROMOTION!!!
570	Wanted	Information on any Smurf Cookie Cutters produced!!
571	For Sale	Christmas Ornaments by ALDERBROOK, CANADA, as featured in this Newsletter. 1982 Smurfette, 1982 Papa Smurf. Please state interest in first Letter! Mint in box!
572	For Sale	Wooden Puzzle, as featured in this Newsletter. Smurfette Playing Ping-Pong. Mint in box!
573	For Sale	SMURF FIGURINES ON TREE STUMP, PENCIL SHARPENERS. ALL MINT! Please state interest in first letter. Schleich Germany. 1. Shiver 2. Laughing 3. Prisoner 4. Rock N Roll 5. Angry (Black Smurf) 6. Jester 7. Scholar 8. Cowgirl 9. Mermaid (BLUE) 10. Smurf Graduate (WINE) 11. C.B. Operator 12. Indian (Black Feathers)
574	For Sale	Original Issue Boxer Smurf, Black shoes, green pants, red shirt, brown & white boxing gloves. Mint condition.
575	For Sale	RARE, Smurf #20065 Rugby, Black shoes, red socks, white pants, red shirt with white trim. W. German painted in Portugal, almost MINT!
576	For Sale	RARE, Smurf #20055 Golfer, Black & White shoes, yellow socks, red pants, Silver and brown golf club, white ball!!!! Mint.
577	For Sale	German Comic Books, "Die Schlumpfe" glossy paper GREAT COLOR & Artwork. Issues #19, #22, #23, #24, #25, #26. Back Issues available #4, #5, #6, #7, #8, #9, #13, #14, #15, #16, #17, #18. COLLECT THEM ALL!! Please state interest in letter. Mint!

More Ads on Next Page

BUY...SELL...TRADE

Continued.....

Ad #		
578	For Sale	ALL NEW, GERMAN SMURF ALBUM (Book) Four Smurf Stories. by Bastei. No. 3. Mint.
579	For Sale	From Germany, by Schmid, Smurf Card Game. Mint in box.
580	For Sale	RARE! OLD! Smurf Mini by BULLY. 1" PVC Mini Sleepwalker figurines on round base. 1. Black & white. 2. Yellow & white. 3. Red & White. Please state interest in first letter.
581	For Sale	Figurine #20020 Gymnast, NO SHIRT!! RARE! MINT!
582	For Sale	Figurine #20014 Sunbather, Red & White Bathing Suit. Mint!
583	For Sale	Christmas Cord Smurf...Smurf Holding Large Green Box. Paint variation! Scarf and ribbon on box is a bright RED! Not burgundy! Mint!
584	For Sale	Featured in Newsletter 26, Fall 1992. Prototype Smurf Calendar!! In Chinese and English, can be used for ANY YEAR! Complete with instructions and stickers. MINT!
585	For Sale	Smurf figurines with the 1985 Jubilee Issue Gold Seal on their heads: loose, not packaged. Mint. 1. #20014 Judge 2. #20002 Normal 3. #20030 Torchbearer 4. # 20183 Aerobic Smurfette Two variations: Lavender Legwarmers Purple Legwarmers Please state interest in first letter.
586	For Sale	Schleich, Germany, Smurf stamps, with ink pad. 1. Pastel Indian figurine 2. Gymnast 3. Telephone 4. Mailman All have different stamps. Please state interest in first letter.
587	For Sale	Smurf Christmas Cords Series #52900 1. Papa Smurf w/ Sack of Toys. 5. Smurf w/ Bag of Toys 2. Smurf w/Xmas Tree 6. Smurf w/ Drum 3. Smurf w/ Song Sheet 7. Smurfette w/ Candy Cane 4. Smurfette w/ Song Sheet Please state interest in first letter.
588	For Sale	German Stickers 6", featuring Nat, says: "Hier gibt's die Schlumpfe." SCHLEICH. Mint.
589	For Sale	Figurine #20176 German St. Patrick, original issue, WITH RED HAT BAND! Mint.
590	For Sale	Figurine #20021 Sleepwalker with RED PON POM!. Mint!
591	For Sale	Promotional Smurf #20057 Thirsty with Green Bottle, "Staatl Fachingen" printed on bottle. Mint.
592	For Sale	RARE "BULLY" GARGAMEL MOLD, one finger pointed upward, NO LAB GLASS IN THAT HAND. Mold MINT, paint fair.

VARIATIONS

continued from Newsletter 29

Special Note: We are continuously updating this section. If you have a variation paint or mold, that does not appear on our listing, please write to us giving all details. Thanks in advance.

#20163	Soccer Smurfette	1. White shoes, with peach and red trim. White shorts, white shirt with peach and red trim, white ball. The Hong Kong version did not come on a base! 2. White shoes, with orange and red trim, White shorts, white shirt with orange and red trim, white ball, Green smooth base. 3. White shoes, with darker orange and red trim, White shorts, white shirt with darker orange and red trim, white ball, Green smooth base. 4. White shoes, with dark peach and red trim, white shorts, white shirt with dark peach and red trim. white ball, dark green (grass effect) base. Special Note: Variations in the ball are noted.
#20164	Papa w/Lab Glass	1. White injected mold. Red shoes and pants, orange lab glass, green lab glass, red hat. 2. Red injected mold. Red shoes and pants, dark orange lab glass, dark green lab glass, red hat. 3. Lighter red injected mold. Lighter red shoes and pants and hat. Lab glass red and green. 4. Red injected mold. Red shoes and pants, dark gold lab glass, green lab glass, red hat.

Please correct the number on the Waiter figurine in our last Variation Section, it should read #20162. Thank you.